

財源机械五金贸易  
CHYE GUAN TRADING

No. 82 & 84, Jalan Suria 2, Taman Malim Jaya, 75250 Melaka.  
Tel: 06- 3363480, 06-3363482 Fax: 06-3363480  
Email: chyeguan82@gmail.com

## AIR CIRCULATION PRODUCT

### INDUSTRIAL STAND & WALL FAN

Feature:

- Wide Cooling Effect
- Low Noise Level
- Small Electricity Consumption
- Safe & Reliable
- Easy to install & Dismantle



Model	FB-65	FB-65
Type	Stand	Wall
Fan Blade	26"	26"
Volt (v)	220-240	220-240
Power (w)	230	230
Min Volume (m3/min)	205	205
Speed (rpm)	1300	1300

*Application:*

*Dust Blowing, kitchen, factory, warehouse, workshop, auditoria, restaurant & public place*

財源机械五金贸易  
CHYE GUAN TRADING

No. 82 & 84, Jalan Suria 2, Taman Malim Jaya, 75250 Melaka.  
Tel: 06- 3363480, 06-3363482 Fax: 06-3363480  
Email: chyeguan82@gmail.com

## AIR CIRCULATION PRODUCT

### FLOOR FAN

Feature:

- Powerful twister air & adjustable angle
- Low in heat and noise level
- Energy-saving & low centre of gravity
- Easy to move and has a protective guard

*Application:*

*Office, House, Restaurant and factory*



Model	Size (mm)	Voltage (v)	Power (w)	Speed (rpm)	Air Volume (m3/min)
FE-30X	300	220-240	55	1350	45
FE-40X	400	220-240	140	1350	82
FE-45X	450	220-240	180	1350	120
FE-50X	500	220-240	240	1350	140

### FLOOR & CARPET DRYER



Feature:

- Stackable design with built-in cord wrap
- Light weight molded polyethylene construction
- Three Speed Controller

Model	SDF-27
Voltage (v)	220~240
Power (w)	900
Speed (rpm)	1350
Air Volume (m3 /min)	160
Impeller Size (mm)	270
Noise Level (dB)	86
Dimension (mm)	485 x 448 x 510
Weight (kg)	16.5



*Application:*

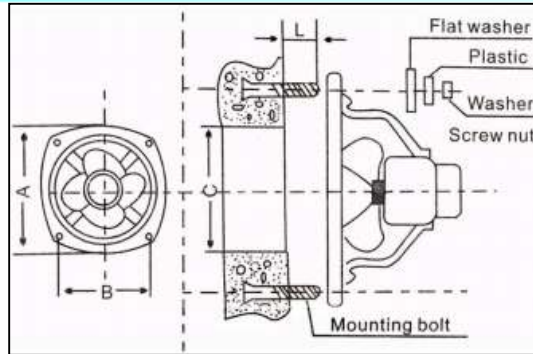
*Recommended for carpets, hard floors and upholstery*

**財源机械五金贸易**  
**CHYE GUAN TRADING**

No. 82 & 84, Jalan Suria 2, Taman Malim Jaya, 75250 Melaka.  
Tel: 06- 3363480, 06-3363482 Fax: 06-3363480  
Email: chyeguan82@gmail.com

## AIR CIRCULATION PRODUCT

### HEAVY DUTY EXHAUST FAN



Size (mm)	A(mm)	B(mm)	C(mm)	L(mm)
300 (12")	386	308	Ø326	≥25
400 (15")	480	380	Ø416	≥25
450 (18")	556	432	Ø476	≥30
600 (24")	720	570	Ø620	≥30

Model	Size (mm)	Voltage (v)	Air Volume (m3 /min)	Speed (rpm)	Power (w)
FA-30II	300 (12")	220~240	32	1400	130
FA-38II	375 (15")	220~240	68	1400	220
FA-45II	450 (18")	220~240	100	1400	380
FTA-45II	450 (18")	380~420	100	1400	380
FA-60II	600 (24")	220~240	115	960	400
FTA-60II	600 (24")	380~420	115	960	400

### PORTABLE VENTILATION FAN

Feature:

- Large capacity motor with E-class, long endurance
- Specially designed axial propellers
- High static pressure, high flow rate and excellent strength

Model	Diameter (mm)	Voltage (v)	Power (w)	Air Volume (m3 /min)	Speed (rpm)
SHT-30A	300 (12")	220~240	520	60	2800
SHT-40	400 (16")	220~380	1100	96	2800
SHT-45	450 (18")	220~380	1700	125	2800
SHT-50	500 (20")	220~380	750	150	1400
SHT-60	600 (24")	220~380	1100	192	1400



*Application:*

*Ventilation for mini, underground, drainage workshop, gas exhaust dust blowing, fresh air and sky dancer.*