



财源机械五金贸易

CHYE GUAN TRADING (JM0147180-M)

No 82 & 84, Jalan Suria 2, Taman Malim Jaya,
75250 Melaka.

Tel: 06-3363480, 06-3363482 Fax: 06-3363480

Email: chyeguan82@gmail.com

BAR & SNACK EQUIPMENT

Fryer (Gas)

1. EF-72

Capacity : 5.5L+5.5L
Control Switch : 2
Gas : LPG
Gas Pressure : 2.8kpa
Weight : 22kg
Dim : 58 x 52 x 45cm



2. GF-171

Capacity : 17L
Control Switch : 1
Gas : LPG
Gas Pressure : 2.8kpa
Temperature : 0-200°C
Weight : 19kg
Dim : 31 x 67 x 77cm



3. GF-172

Capacity : 17L+17L
Control Switch : 2
Gas : LPG
Gas Pressure : 2.8kpa
Temperature : 0-200°C
Weight : 40kg
Dim : 62 x 67 x 77cm



4. WGF-461

Capacity : 46L
Control Switch : 1
Gas : LPG
Gas Pressure : 2.8kpa
Temperature : 0-200°C
Weight : 48kg
Dim : 45 x 70 x 98cm



5. AT-17L

Type : Table Top
Capacity : 17L
Control Switch : 1
Gas : LPG
Gas Pressure : 2.8kpa
Temperature : 160-220°C
Weight : 18.7kg
Dim : 53 x 65 x 45cm



6. AT-23C

Type : Vertical
Capacity : 23L
Control Switch : 1
Gas : LPG
Gas Pressure : 2.8kpa
Temperature : 160-220°C
Weight : 38kg
Dim : 55 x 60 x 97cm



7. MPT-36JP

Capacity : 60L
Gas : LPG
Gas Pressure : 2.8kpa
Oil Size : 79 x 43 x 29cm
Weight : 71kg
Dim : 85 x 60 x 97cm



8. MPT-46JP

Capacity : 80L
Gas Pressure : 2.8kpa
Oil Size : 99 x 43 x 29cm
Weight : 96.4kg
Dim : 105 x 60 x 97cm

Fryer (Electric)

9. WEF-171

Capacity : 17L
Lift : Manual
Power : 3kW / 230V / 50Hz
Weight : 10kg
Dim : 29 x 53 x 36cm



10. WEF-172

Capacity : 17L+17L
Lift : Manual
Power : 3+3kW / 230V / 50Hz
Weight : 19kg
Dim : 59 x 53 x 36cm



11. EF-82

Capacity : 5.5L+5.5L
Lift : Manual
Power : 2.5+2.5kW / 230V / 50Hz
Weight : 9kg
Dim : 58 x 46 x 31cm





财源机械五金贸易

CHYE GUAN TRADING (JM0147180-M)

No 82 & 84, Jalan Suria 2, Taman Malim Jaya,
75250 Melaka.

Tel: 06-3363480, 06-3363482 Fax: 06-3363480

Email: chyeguan82@gmail.com

BAR & SNACK EQUIPMENT

Barbecue Oven

12.VSK-702

Gas : LPG
Tube : Ø1.2cm
Burn Value : 35MJ
Weight : 27.5kg
Dim : 107 x 40 x 25cm



Electric Conveyor Toaster

17.TT-300

Power : 1.94kW / 230V / 50Hz
Productivity : 300-350slices/hr
Weight : 16kg
Dim : 42 x 37 x 39cm



Environmental Roaster (Gas)

13.ET-K22

Style : Luxury
Head : 4
Cover : Quartz glass
Shell : Stainless steel
Weight : 24kg
Dim : 58 x 40 x 18cm



Electric Salamander

18.EB-600

Power : 4kW / 230V / 50Hz
Weight : 49kg
Dim : 60 x 45 x 50cm



14.ET-K222

Style : Standard
Head : 4
Cover : Standard
Shell : Sprayed
Weight : 11kg
Dim : 58 x 40 x 18cm



Hot Dog Roller

19.RG-7

Roller : 7
Power : 0.7kW / 230V / 50Hz
Weight : 7.8kg
Dim : 44 x 32 x 18cm



15.ET-K23

Style : Luxury
Head : 6
Cover : Quartz glass
Shell : Stainless steel
Weight : 27kg
Dim : 80 x 40 x 18cm



20.RG-9

Roller : 9
Power : 0.9kW / 230V / 50Hz
Weight : 12kg
Dim : 55 x 40 x 18cm



16.ET-K233

Style : Standard
Head : 6
Cover : Standard
Shell : Sprayed
Weight : 14kg
Dim : 80 x 40 x 18cm



Hamburger Machine

21.HF-100

Hamburger : Ø10cm
Weight : 5.2kg
Dim : 25 x 20 x 27cm



22.HF-130

Hamburger : Ø13cm
Weight : 5.5kg
Dim : 50 x 20 x 27cm

FRESH[®]



财源机械五金贸易

CHYE GUAN TRADING (JM0147180-M)

No 82 & 84, Jalan Suria 2, Taman Malim Jaya,
75250 Melaka.

Tel: 06-3363480, 06-3363482 Fax: 06-3363480

Email: chyeguan82@gmail.com

BAR & SNACK EQUIPMENT

Waffle Baker

31.UWB-2

Baker : $\varnothing 17.8 + \varnothing 17.8$ cm
Power : 1+1kW / 230V / 50Hz
Weight : 17kg
Dim : 50 x 38 x 30cm



Electric Bain Marie

34.BS-6V

Head : 6
Pan : 11 3/4" x 6" x 6"
Power : 1.5kW / 230V / 50Hz
Weight : 19kg
Dim : 69.5 x 63.5 x 28cm



Egg Cake Baker

32.VE-01

Power : 1.4kW / 230V / 50Hz
Weight : 3kg
Dim : 54 x 25 x 26cm



Table Noodle Cooker

35.MP-4H (Electric)

Head : 4
Power : 4kW / 230V / 50Hz
Weight : 13kg
Dim : 42.5 x 60 x 39cm



Food Display Warmer

33.MME-500H

Power : 0.9kW / 230V / 50Hz
Temperature : 50-110°C
Weight : 24kg
Dim : 38 x 40 x 75cm



36.MP-6H (Electric)

Head : 6
Power : 6kW / 230V / 50Hz
Weight : 17kg
Dim : 60 x 60 x 39cm



37.MP-6QH (Gas)

Head : 6
Weight : 32kg
Dim : 60 x 69 x 93cm



FRESH





财源机械五金贸易

CHYE GUAN TRADING (JM0147180-M)

No 82 & 84, Jalan Suria 2, Taman Malim Jaya,
75250 Melaka.

Tel: 06-3363480, 06-3363482 Fax: 06-3363480

Email: chyeguan82@gmail.com

BAR & SNACK EQUIPMENT

Candy Floss Machine

38.MJ500 (Electric)

Bowl : Ø52 x 18cm

Motor : 0.08kW

Power : 0.95kW / 230V / 50Hz

Productivity : 240-360pcs/h

Weight : 13kg

Dim : 52 x 52 x 44cm



Cup Sealer

42.BF05

Cup : Ø7.5-Ø9.5cm

Operating : Semi-Auto

Power : 0.35kW / 230V / 50Hz

Productivity : 300-500cups/h

Weight : 13kg

Dim : 29 x 30 x 51cm



39.MJ500 (Gas)

Bowl : Ø52 x 18cm

Motor : 0.08kW

Productivity : 240-360pcs/h

Weight : 17kg

Dim : 52 x 52 x 44cm



43.QF08

Cup : Ø7.5-Ø9.5cm

Operating : Auto

Power : 0.4kW / 230V / 50Hz

Productivity : 400-600cups/h

Weight : 26kg

Dim : 34 x 38 x 59cm



Coffee Grinder

(made in Taiwan)

40.CM-370

Power : 0.37kW / 230V / 50Hz

Speed : 1,450rpm

Weight : 7kg

Dim : 34 x 21 x 55cm



44.ET-999S

(Made in Taiwan)

Cup : Ø4-Ø9.5cm

Operating : Auto

Power : 0.35kW / 230V / 50Hz

Productivity : 450cups/h

Weight : 26kg

Dim : 25 x 34 x 64cm



Popcorn Machine

41.EB-08

Power : 1.3kW / 230V / 50Hz

Weight : 20kg

Dim : 52 x 38 x 67cm



Electric Plate Warmer Cart

45.DR-2

Holder : 2

Power : 0.8kW / 230V / 50Hz

Weight : 48kg

Dim : 45 x 91 x 94cm



Insect Killer

46.TI-2020

Action Range : 1200-1500cm

Material : E.G.

Power : 0.065kW / 230V / 50Hz

Paint Coated : Epoxy

Weight : 8.7kg

Dim : 62 x 15 x 50cm



FRESH



财源机械五金贸易

CHYE GUAN TRADING (JM0147180-M)

No 82 & 84, Jalan Suria 2, Taman Malim Jaya,
75250 Melaka.

Tel: 06-3363480, 06-3363482 Fax: 06-3363480

Email: chyeguan82@gmail.com

BAKERY & NOODLE EQUIPMENT

Dough Sheeter & Noodle Machine

1. MT-12.5

Power : 1.1kW / 230V / 50Hz
Productivity : 12-20kg/h
Roller : 15 x Ø9cm
Weight : 73kg
Dim : 35 x 29 x 86cm



7. MT-12.5 (S/S)

Power : 1.1kW / 230V / 50Hz
Productivity : 12-20kg/h
Roller : 15 x Ø9cm
Weight : 73kg
Dim : 35 x 29 x 86cm



2. MT-25

Power : 1.1kW / 230V / 50Hz
Productivity : 20-30kg/h
Roller : 20 x Ø9cm
Weight : 81kg
Dim : 40 x 30 x 86cm

8. MT-25 (S/S)

Power : 1.1kW / 230V / 50Hz
Productivity : 20-30kg/h
Roller : 20 x Ø9cm
Weight : 81kg
Dim : 40 x 30 x 86cm

3. MT-30

Power : 1.5kW / 230V / 50Hz
Productivity : 25-30kg/h
Roller : 25 x Ø9cm
Weight : 88kg
Dim : 45 x 30 x 86cm

9. MT-50B (S/S)

Power : 1.5kW / 230V / 50Hz
Productivity : 60kg/h
Roller : 25 x Ø12.3cm
Weight : 150kg
Dim : 56 x 55 x 104cm



4. MT-25T

Power : 0.37kW / 230V / 50Hz
Productivity : 25kg/h
Roller : 21 x Ø6cm
Weight : 28kg
Dim : 33 x 25 x 32cm



10. MT-60B (S/S)

Power : 1.5kW / 230V / 50Hz
Productivity : 60kg/h
Roller : 30 x Ø12.3cm
Weight : 160kg
Dim : 60 x 55 x 105cm



5. MT-288 (S/S)

Power : 1.1kW / 230V / 50Hz
Roller Width : 28.8cm
Thickness : 0.2-1cm
Weight : 101kg
Dim : 71 x 56 x 123cm



11. DS 1/2 (S/S)

Power : 0.37hp / 230V / 50Hz
Roller Width : 30cm
Thickness : 0.1-1cm
Weight : 59kg
Dim : 62 x 72 x 40cm

12. LSP-500

Conveyer Belt : 50 x 200cm
Power : 0.75kW / 230V / 50Hz
Roller Width : 50cm
Thickness : 0.1-4cm
Weight : 235kg
Dim : 206 x 80 x 102cm

6. JDR-520B

Conveyer Belt : 50 x 200cm
Power : 0.37kW / 230V / 50Hz
Roller Width : 52cm
Thickness : 0.1-4cm
Weight : 125kg
Dim : 88 x 208 x 62cm





财源机械五金贸易

CHYE GUAN TRADING (JM0147180-M)

No 82 & 84, Jalan Suria 2, Taman Malim Jaya,
75250 Melaka.

Tel: 06-3363480, 06-3363482 Fax: 06-3363480

Email: chyeguan82@gmail.com

BAKERY & NOODLE EQUIPMENT

Food Mixer

13.B5

Bowl : 5L
Flour : 1kg
Power : 0.2kW / 230V / 50Hz
Weight : 14kg
Dim : 24 x 22 x 40cm



14.B7

Bowl : 7L
Flour : 1.5kg
Power : 0.28kW / 230V / 50Hz
Weight : 16kg
Dim : 24 x 22 x 40cm



15.B10-3

Bowl : 10L
Flour : 3kg
Power : 0.6kW / 230V / 50Hz
Weight : 70kg
Dim : 40 x 51 x 61cm



16.B20

Bowl : 20L
Flour : 6kg
Power : 1.1kW / 230V / 50Hz
Weight : 110kg
Dim : 60 x 44 x 79cm



17.B10-3E

Bowl : 10L
Flour : 3kg
Power : 0.6kW / 230V / 50Hz
Weight : 68kg
Dim : 40 x 51 x 61cm



18.B20E

Bowl : 20L
Flour : 6kg
Power : 1.1kW / 230V / 50Hz
Weight : 108kg
Dim : 60 x 44 x 79cm



19.B30

Bowl : 30L
Flour : 8kg
Power : 1.5kW / 230V / 50Hz
Weight : 180kg
Dim : 53 x 44 x 91cm



Food Mixer

(made in Taiwan)

20.SE-101

Bowl : 10L
Flour : 2kg
Power : 0.45kW / 230V / 50Hz
Weight : 75kg
Dim : 49 x 41 x 64cm



21.SE-201

Bowl : 20L
Flour : 4kg
Power : 0.38kW / 230V / 50Hz
Weight : 90kg
Dim : 55 x 50 x 84cm



22.SE-301

Bowl : 30L
Flour : 7kg
Power : 0.75kW / 230V / 50Hz
Weight : 150kg
Dim : 63 x 64 x 101cm



23.SE-401

Bowl : 40L
Flour : 10kg
Power : 1.1kW / 230V / 50Hz
Weight : 170kg
Dim : 64 x 61 x 105cm



24.SE-501

Bowl : 50L
Flour : 14kg
Power : 1.5kW / 230V / 50Hz
Weight : 200kg
Dim : 65 x 61 x 107cm





财源机械五金贸易

CHYE GUAN TRADING (JM0147180-M)

No 82 & 84, Jalan Suria 2, Taman Malim Jaya,
75250 Melaka.

Tel: 06-3363480, 06-3363482 Fax: 06-3363480

Email: chyeguan82@gmail.com

BAKERY & NOODLE EQUIPMENT

Spiral Mixer

25.FM50

Bowl : 75L
Flour : 30kg
Dough : 50kg
Power : 3.3kW / 415V / 50Hz
Speed : 2
Weight : 285kg
Dim : 95 x 62 x 127cm



26.FM80

Bowl : 134L
Flour : 50kg
Dough : 80kg
Power : 5.75kW / 415V / 50Hz
Speed : 2
Weight : 460kg
Dim : 121 x 74 x 143cm



27.HS-20

Bowl : 21L
Flour : 8kg
Dough : 12kg
Power : 1.5kW / 230V / 50Hz
Speed : 112/198rpm
Weight : 90kg
Dim : 73 x 39 x 90cm



28.HS-30

Bowl : 35L
Flour : 12.5kg
Dough : 20kg
Power : 1.5kW / 230V / 50Hz
Speed : 112/198rpm
Weight : 100kg
Dim : 75 x 44 x 90cm



29.HS-60

Bowl : 54L
Flour : 20kg
Dough : 32kg
Power : 3kW / 230V / 50Hz
Speed : 112/198rpm
Weight : 170kg
Dim : 84 x 48 x 100cm

Dough Mixer

30.HWH-15

Flour : 15kg
Power : 1.1kW / 230V / 50Hz
Speed : 42rpm
Weight : 68kg
Dim : 68 x 52 x 70cm

31.HWH-25

Flour : 25kg
Power : 1.5kW / 230V / 50Hz
Speed : 42rpm
Weight : 85kg
Dim : 80 x 58 x 74cm

32.HWH-50

Flour : 50kg
Power : 2.2kW / 415V / 50Hz
Speed : 42rpm
Weight : 118kg
Dim : 92 x 64 x 92cm



Dough Divider

33.B-36

(made In Taiwan)
Dividing Weight : 0.035-0.1kg
Power : 0.18kW / 230V / 50Hz
Productivity : 36pcs each time
Weight : 120kg
Dim : 52 x 42 x 120cm



Dough Divider & Rounder

34.NFK-30

Dividing Weight : 0.03-0.1kg
Power : 0.75kW / 230V / 50Hz
Productivity : 30pcs each time
Weight : 210kg
Dim : 64 x 54 x 210cm

35.NFK-36

Dividing Weight : 0.03-0.1kg
Power : 0.75kW / 230V / 50Hz
Productivity : 36pcs each time
Weight : 345kg
Dim : 60 x 71 x 210cm





财源机械五金贸易
CHYE GUAN TRADING (JM0147180-M)

No 82 & 84, Jalan Suria 2, Taman Malim Jaya,
 75250 Melaka.

Tel: 06-3363480, 06-3363482 Fax: 06-3363480

Email: chyeguan82@gmail.com

BAKERY & NOODLE EQUIPMENT



Food Oven (Electric)

36.YXD-10ACY

Layer : 1
 Dish : 1
 Power : 3kW / 230V / 50Hz
 Weight : 68kg
 Dim : 92 x 64 x 44cm

38.YXD-40C

Layer : 2
 Dish : 4
 Power : 13kW / 415V / 50Hz
 Weight : 198kg
 Dim : 122 x 86 x 126cm

40.YXD-60C

Layer : 3
 Dish : 6
 Power : 19.5kW / 415V / 50Hz
 Weight : 288kg
 Dim : 122 x 86 x 154cm

37.YXD-20C

Layer : 1
 Dish : 2
 Power : 6.5kW / 230(415)V / 50Hz
 Weight : 128kg
 Dim : 122 x 86 x 53cm

39.YXD-S-60C

Layer : 2
 Dish : 6
 Power : 19.5kW / 415V / 50Hz
 Weight : 288kg
 Dim : 166 x 86 x 128cm

41.YXD-90C

Layer : 3
 Dish : 9
 Power : 24kW / 415V / 50Hz
 Weight : 380kg
 Dim : 165 x 86 x 157cm



Food Oven (Gas)

42.YXY-12A

Layer : 1
 Dish : 1
 Power : 0.1kW / 230V / 50Hz
 Weight : 63kg
 Dim : 90 x 96 x 57cm

44.YXY-40AY

Layer : 2
 Dish : 4
 Power : 0.2kW / 230V / 50Hz
 Weight : 231kg
 Dim : 140 x 99 x 145cm

46.YXY-60AY

Layer : 3
 Dish : 6
 Power : 0.3kW / 230V / 50Hz
 Weight : 302kg
 Dim : 140 x 99 x 183cm

43.YXY-20AY

Layer : 1
 Dish : 2
 Power : 0.1kW / 230V / 50Hz
 Weight : 135kg
 Dim : 140 x 99 x 77cm

45.YXY-S-60AY

Layer : 2
 Dish : 6
 Power : 0.3kW / 230V / 50Hz
 Weight : 300kg
 Dim : 182 x 99 x 145cm





财源机械五金贸易

CHYE GUAN TRADING (JM0147180-M)

No 82 & 84, Jalan Suria 2, Taman Malim Jaya,
75250 Melaka.

Tel: 06-3363480, 06-3363482 Fax: 06-3363480

Email: chyeguan82@gmail.com

BAKERY & NOODLE EQUIPMENT



Food Oven (Gas)

47.YXY-40SS (S/Steel)

Layer : 2
Dish : 4
Power : 0.2kW / 230V / 50Hz
Weight : 231kg
Dim : 140 x 99 x 145cm

49.YXY-60SS (S/Steel)

Layer : 3
Dish : 6
Power : 0.3kW / 230V / 50Hz
Weight : 302kg
Dim : 140 x 99 x 183cm

48.YXY-S-60SS (S/Steel)

Layer : 2
Dish : 6
Power : 0.3kW / 230V / 50Hz
Weight : 300kg
Dim : 182 x 99 x 145cm

50.YXY-90SS (S/Steel)

Layer : 3
Dish : 9
Power : 0.3kW / 230V / 50Hz
Weight : 442kg
Dim : 182 x 99 x 183cm



51.YXY-20AS

Layer : 1
Dish : 2
Power : 0.1kW / 230V / 50Hz
Weight : 120kg
Dim : 124 x 87 x 55cm



53.YXY-40AS

Layer : 2
Dish : 4
Power : 0.2kW / 230V / 50Hz
Weight : 220kg
Dim : 124 x 87 x 105cm



55.YXY-60AS

Layer : 3
Dish : 6
Power : 0.3kW / 230V / 50Hz
Weight : 290kg
Dim : 124 x 87 x 151cm

52.YXY-30AS

Layer : 1
Dish : 3
Power : 0.1kW / 230V / 50Hz
Weight : 140kg
Dim : 165 x 94 x 66cm

54.YXY-S-60AS

Layer : 2
Dish : 6
Power : 0.2kW / 230V / 50Hz
Weight : 290kg
Dim : 165 x 94 x 132cm

56.YXY-90AS

Layer : 3
Dish : 9
Power : 0.3kW / 230V / 50Hz
Weight : 430kg
Dim : 165 x 94 x 170cm





财源机械五金贸易
CHYE GUAN TRADING (JM0147180-M)

No 82 & 84, Jalan Suria 2, Taman Malim Jaya,
75250 Melaka.

Tel: 06-3363480, 06-3363482 Fax: 06-3363480

Email: chyeguan82@gmail.com

BAKERY & NOODLE EQUIPMENT

Fermenting Box

57.FX-11B (S/S)
Layer : 11
Power : 2.4kW / 230V / 50Hz
Weight : 50kg
Dim : 50 x 75 x 161cm



58.FX-22B (S/S)
Layer : 22
Power : 2.6kW / 230V / 50Hz
Weight : 85kg
Dim : 102 x 75 x 162cm

Electric Dryer

61.XYD-1A (S/S)
Layer : 10
Size of Layer : 40 x 60 cm
Power : 4.2kW / 230V / 50Hz
Temperature Control : 0-100°C
Weight : 105kg
Dim : 85 x 62 x 141cm



Bread Slicer

59.TA-201
(made in Taiwan)
Power : 0.18kW / 230V / 50Hz
Thickness : 1.2cm x 31pcs
Weight : 70kg
Dim : 68 x 61 x 69cm



Electric Oven

62.EC01C (with two fan)
Aluminium Plate : 4pcs (31.8 x 40cm)
Chamber : 46 x 37 x 35cm
Power : 4.5kW / 230V / 50Hz
Temperature : 50-350°C
Weight : 37kg
Dim : 67 x 65 x 47cm



60.TR-12
Power : 0.25kW / 230V / 50Hz
Thickness : 1.2cm x 30pcs
Weight : 60kg
Dim : 65 x 74 x 75cm



63.EC01E (with one fan)
Aluminium Plate : 4pcs (58 x 40cm)
Chamber : 62 x 42 x 45cm
Power : 6kW / 230V / 50Hz
Temperature : 50-350°C
Weight : 65kg
Dim : 88 x 80 x 58cm



FRESH



财源机械五金贸易
CHYE GUAN TRADING (JM0147180-M)

No 82 & 84, Jalan Suria 2, Taman Malim Jaya,
75250 Melaka.

Tel: 06-3363480, 06-3363482 Fax: 06-3363480

Email: chyeguan82@gmail.com

COCONUT MACHINE

Coconut Grinder

1. BCM

Type : Box
Power : 0.18kW / 230V / 50Hz
Speed : 1,400rpm
Weight : 5.7kg
Dim : 39 x 32 x 60cm



2. SCM

Type : Stand
Power : 0.18kW / 230V / 50Hz
Speed : 1,400rpm
Weight : 5.8kg
Dim : 44 x 47 x 87cm



3. FCG-1

Type : Stand
Power : 0.75kW / 230V / 50Hz
Productivity : 150pcs/h
Speed : 3,000rpm
Weight : 34kg
Dim : 47 x 37 x 125cm



4. AECS 630

Power : 0.75kW / 230V / 50Hz
Productivity : 200pcs/h
Speed : 1,500rpm
Weight : 55kg
Dim : 47 x 65 x 90cm



Milk Extractor

5. L-CME16

Power : 1.1kW / 230V / 50Hz
Productivity : 35kg/h
Weight : 124kg
Dim : 102 x 46 x 96cm



6. L-CME20

Power : 1.5kW / 230V / 50Hz
Productivity : 80kg/h
Weight : 209kg
Dim : 117 x 57 x 113cm



7. L-A66

Power : 2.2kW / 230V / 50Hz
Productivity : 100kg/h
Weight : 222kg
Dim : 140 x 61 x 97cm



8. L-A668

Power : 2.2kW / 230(415)V / 50Hz
Productivity : 140kg/h
Weight : 304kg
Dim : 150 x 72 x 112cm





财源机械五金贸易

CHYE GUAN TRADING (JM0147180-M)

No 82 & 84, Jalan Suria 2, Taman Malim Jaya,
75250 Melaka.

Tel: 06-3363480, 06-3363482 Fax: 06-3363480

Email: chyeguan82@gmail.com

COFFEE & JUICE MAKING MACHINE

Blender

1. FB-767

Container Cap : 2L
Input Source : 0.95kW / 230V / 50Hz
Max Output Power : 2.22kW
Speed : 38,000rpm
Weight : 4.3kg
Dim : 34 x 24 x 28cm



2. LY-767

Container Cap : 2L
Input Source : 1.5kW / 220V / 50Hz
Max Output Power : 2.22kW
Speed : 22,000rpm
Weight : 4.5kg
Dim : 32 x 26 x 36cm



3. TM-800AQ

Container Cap : 1.5L
Input Source : 0.95kW / 230V / 50Hz
Max Output Power : 2.22kW
Speed : 38,000rpm
Weight : 6.3kg
Dim : 25 x 30 x 46cm



Juicer

4. KP60SC

Power : 0.8kW / 220V / 50Hz
Speed : 16,500rpm & 22,000rpm
Weight : 5kg
Dim : 28 x 22 x 42cm



Milk Shake Mixer

5. ER-K1

Cup : Single
Power : 0.15kW
Voltage : 230V / 50Hz
Weight : 3kg
Dim : 19 x 16 x 53cm



6. ER-K2

Cup : Double
Power : 0.15+0.15kW
Voltage : 230V / 50Hz
Weight : 5.5kg
Dim : 23 x 23 x 53cm

West Bend Coffee Maker

(made in USA)

7. 58016

Capacity : 6.9L
Cup : 36
Power : 230V / 50Hz
Weight : 0.55kg



8. 58015

Capacity : 9L
Cup : 55
Power : 230V / 50Hz
Weight : 0.8kg



9. 58010

Capacity : 16.3L
Cup : 100
Power : 230V / 50Hz
Weight : 1.5kg



Sugarcane Machine

10.SCM-C

Roller : Brass
Power : 4kW Petrol Engine /
0.75kW Electric Motor

11.SCM-SS

Roller : Stainless Steel
Power : 4kW Petrol Engine /
0.75kW Electric Motor



FRESH



财源机械五金贸易

CHYE GUAN TRADING (JM0147180-M)

No 82 & 84, Jalan Suria 2, Taman Malim Jaya,
75250 Melaka.

Tel: 06-3363480, 06-3363482 Fax: 06-3363480

Email: chyeguan82@gmail.com

SOYABEAN PROCESSING MACHINE

Soyabean Machine

1. FDM-100
Stone Size : Ø4"
Power : 0.75kW / 230V / 50Hz
Productivity : 30kg/h
Weight : 22kg
Dim : 33 x 33 x 75cm
2. FDM-125
Stone Size : Ø5"
Power : 1.1kW / 230V / 50Hz
Productivity : 50kg/h
Weight : 38kg
Dim : 40 x 40 x 77cm
3. FDM-150
Stone Size : Ø6"
Power : 2.2kW / 230V / 50Hz
Productivity : 100kg/h
Weight : 44kg
Dim : 41 x 44 x 90cm



Soya Milk Maker

7. ET-09 (Gas)
Power : 1.1kW / 230V / 50Hz
Productivity : 80kg/h
Weight : 82kg
Dim : 80 x 50 x 110cm
8. ET-10 (Electric)
Power : 10.1kW / 230(415)V / 50Hz
Productivity : 80kg/h
Weight : 68kg
Dim : 80 x 50 x 110cm



Bean Curd Machine

9. ET-DF01
Capacity : 12L
Productivity : 12kg/h
Weight : 15kg
Dim : 55 x 55 x 109cm



Soyabean & Rice Grinder

(made in Taiwan)

4. YH-G8
Stone Size : Ø8"
Power : 1.1kW / 230V / 50Hz
Productivity : 60kg/h
Weight : 85kg
5. YH-G10
Stone Size : Ø10"
Power : 1.5kW / 230V / 50Hz
Productivity : 100kg/h
Weight : 105kg
6. YH-G12
Stone Size : Ø12"
Power : 2.2kW / 230V / 50Hz
Productivity : 120kg/h
Weight : 120kg



Chili Grinder

(made in Taiwan)

10. MH-2000-5AC
Power : 0.75kW / 230V / 50Hz
Productivity : 30-70kg/h
Speed : 3,600rpm
Weight : 29kg
Dim : 50 x 28 x 110cm



FRESH



财源机械五金贸易

CHYE GUAN TRADING (JM0147180-M)

No 82 & 84, Jalan Suria 2, Taman Malim Jaya,
75250 Melaka.

Tel: 06-3363480, 06-3363482 Fax: 06-3363480

Email: chyeguan82@gmail.com

COOLING & ICE MAKING MACHINE

Ice Shaving Machine

1. BBJ-G

Power : 0.25kW / 230V / 50Hz
Speed : 1,420rpm
Weight : 32kg
Dim : 42 x 34 x 70cm



Ice Shaving Machine

(made in Taiwan)

5. TB220A

Power : 0.18kW / 230V / 50Hz
Weight : 42kg
Dim : 45 x 31 x 65cm



2. SB100

Power : 0.18kW / 230V / 50Hz
Speed : 1,400rpm
Weight : 8kg
Dim : 45 x 27 x 31cm



6. PDO-B

Plastic Cover : Red
Power : 0.18kW / 230V / 50Hz
Weight : 22kg
Dim : 43 x 39 x 69cm



3. SB108

Power : 0.18kW / 230V / 50Hz
Speed : 2,000rpm
Weight : 6kg
Dim : 43 x 20 x 31cm



7. PDO-B

Plastic Cover : Black & White
Power : 0.18kW / 230V / 50Hz
Weight : 22kg
Dim : 43 x 39 x 69cm



4. SB114 (S/S)

Power : 0.2kW / 230V / 50Hz
Speed : 1,400rpm
Weight : 9kg
Dim : 41 x 25 x 43cm



8. PD-22

Tank Capacity : 1kg
Power : 0.18kW / 230V / 50Hz
Weight : 25kg
Dim : 39 x 29 x 42cm



FRESH



财源机械五金贸易

CHYE GUAN TRADING (JM0147180-M)

No 82 & 84, Jalan Suria 2, Taman Malim Jaya,
75250 Melaka.

Tel: 06-3363480, 06-3363482 Fax: 06-3363480

Email: chyeguan82@gmail.com

COOLING & ICE MAKING MACHINE

Blender

(made in Taiwan)

9. FB-8L

Container Cap : 8L
Power : 0.75kW / 230V / 50Hz
Speed : 3,500rpm
Weight : 25kg
Dim : 29 x 27 x 74cm



10. FB-20L

Container Cap : 20L
Power : 1.5kW / 230V / 50Hz
Speed : 3,500rpm
Weight : 60kg
Dim : 48 x 46 x 108cm



Ice Maker

11. SD-18

Capacity : 8kg
Power : 0.2kW / 230V / 50Hz
Productivity : 20-25kg/day
Weight : 35kg
Dim : 42 x 45 x 76cm



12. SD-22

Capacity : 10kg
Power : 0.29kW / 230V / 50Hz
Productivity : 28-35kg/day
Weight : 40kg
Dim : 50 x 50 x 81cm

13. SD-43

Capacity : 20kg
Power : 0.35kW / 230V / 50Hz
Productivity : 48-55kg/day
Weight : 44kg
Dim : 56 x 51 x 89cm

14. SD-120

Capacity : 45kg
Power : 0.7kW / 230V / 50Hz
Productivity : 120-135kg/day
Weight : 85kg
Dim : 83 x 61 x 101cm



Dispenser

15. LP12x2

Capacity : 2 x 12L
Power : 0.35kW / 230V / 50Hz
Temperature : 8-10°C
Weight : 30kg
Dim : 49 x 47 x 74cm



16. LP12x3

Capacity : 3 x 12L
Power : 0.37kW / 230V / 50Hz
Temperature : 8-10°C
Weight : 38kg
Dim : 67 x 48 x 76cm



17. LP18x2

Capacity : 2 x 18L
Power : 0.54kW / 230V / 50Hz
Temperature : 8-10°C
Weight : 33kg
Dim : 50 x 39 x 73cm





财源机械五金贸易

CHYE GUAN TRADING (JM0147180-M)

No 82 & 84, Jalan Suria 2, Taman Malim Jaya,
75250 Melaka.

Tel: 06-3363480, 06-3363482 Fax: 06-3363480

Email: chyeguan82@gmail.com

KITCHEN MACHINE

Meat Slicer (Automatic)

1. SL-300B
Blade : Ø12"
Cutting Thickness : 0-1.5cm
Power : 0.45kW / 230V / 50Hz
Productivity : 2,220cutting/h
Weight : 68kg
Dim : 64 x 60 x 75cm



2. IS-350
Blade : Ø14"
Cutting Thickness : 0-1.5cm
Power : 0.75kW / 230V / 50Hz
Productivity : 2,400cutting/h
Weight : 223kg
Dim : 96 x 74 x 142cm



Meat Slicer (Semi-Auto)

3. MS250 ST
Blade : Ø10"
Cutting Thickness : 0-1.2cm
Power : 0.15kW / 230V / 50Hz
Weight : 14.3kg
Dim : 52 x 46 x 38cm



4. MS300 ST
Blade : Ø12"
Cutting Thickness : 0-1.2cm
Power : 0.25kW / 230V / 50Hz
Weight : 24.3kg
Dim : 63 x 53 x 47cm



5. QRS-180
Blade : Ø4"
Cutting Thickness : 0.3cm / 0.5cm
Power : 1.5kW / 230V / 50Hz
Productivity : 360kg/h
Weight : 50kg
Dim : 30 x 38 x 76cm



6. QX-2.5 / 3 / 5
Cutting Thickness : 0.25cm/0.3cm/0.5cm
Power : 0.55kW / 230V / 50Hz
Productivity : 250kg/h
Weight : 33kg
Dim : 45 x 32 x 43cm



Meat Chopper

7. MH-237
(made in Taiwan)
Power : 0.37kW / 230V / 50Hz
Productivity : 30kg/h
Weight : 25kg
Dim : 45 x 23 x 39cm



8. MH-337
(made in Taiwan)
Power : 0.75kW / 230V / 50Hz
Productivity : 90kg/h
Weight : 31kg
Dim : 51 x 31 x 42cm



9. TC-42A (S/S)
Power : 4kW / 415V / 50Hz
Productivity : 650kg/h
Weight : 167kg
Dim : 53 x 102 x 95cm



10. TC-52 (S/S)
Power : 5.5kW / 415V / 50Hz
Productivity : 1,300kg/h
Weight : 418kg
Dim : 80 x 135 x 122cm

FRESH[®]



财源机械五金贸易

CHYE GUAN TRADING (JM0147180-M)

No 82 & 84, Jalan Suria 2, Taman Malim Jaya,
75250 Melaka.

Tel: 06-3363480, 06-3363482 Fax: 06-3363480

Email: chyeguan82@gmail.com

KITCHEN MACHINE

Bone Saw Machine

11.SL-210

Belt Wheel : Ø21cm
Blade Speed : 15m/s
Saw Band : 0.05 x 1.5 x 165cm
Cutting Thickness : 0.5-15.5cm
Power : 0.65kW / 230V / 50Hz
Speed : 1,420rpm
Work Bench : 55 x 38cm
Weight : 41kg
Dim : 53 x 47 x 85cm



12.JG-300A

Belt Wheel : Ø30cm
Blade Speed : 15m/s
Saw Band : 0.056 x 2 x 235cm
Cutting Thickness : 3-25cm
Power : 1.5kW / 415V / 50Hz
Speed : 960rpm
Work Bench : 71 x 66cm
Weight : 98kg
Dim : 78 x 71 x 169cm



13.JG-400A

Belt Wheel : Ø40cm
Blade Speed : 15m/s
Saw Band : 0.056 x 2 x 300cm
Cutting Thickness : 3-35cm
Power : 1.5kW / 415V / 50Hz
Speed : 720rpm
Work Bench : 89 x 90cm
Weight : 175kg
Dim : 98 x 116 x 180cm



Chicken Cutter Machine

14.CCM-CM

Blade : Ø9"
Material : Fully S/Steel
Power : 0.75kW / 230V / 50Hz
(China Motor)
Weight : 39kg
Dim : 44 x 41 x 64cm



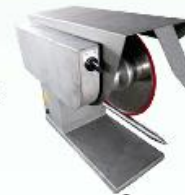
15.CCM-IM

Blade : Ø9"
Material : Fully S/Steel
Power : 0.75kW / 230V / 50Hz
(Italy Motor)
Weight : 31kg
Dim : 44 x 41 x 70cm



16.CCM-JM

Blade : Ø12"
Material : Fully S/Steel
Power : 0.37kW / 230V / 50Hz
(Japan Motor)
Weight : 44kg
Dim : 69 x 33 x 56cm



Chicken Feather Machine

17.CFM-22

Blade : Ø22"
Capacity : 6 birds
Power : 0.75kW / 230V / 50Hz
Weight : 56kg
Dim : 68 x 65 x 98cm

18.CFM-24

Blade : Ø24"
Capacity : 10 birds
Power : 1.1kW / 230V / 50Hz
Weight : 95kg
Dim : 73 x 71 x 98cm

19.CFM-26

Blade : Ø26"
Capacity : 15 birds
Power : 1.5kW / 230V / 50Hz
Weight : 113kg
Dim : 78 x 76 x 105cm



FRESH[®]



财源机械五金贸易

CHYE GUAN TRADING (JM0147180-M)

No 82 & 84, Jalan Suria 2, Taman Malim Jaya,
75250 Melaka.

Tel: 06-3363480, 06-3363482 Fax: 06-3363480

Email: chyeguan82@gmail.com

KITCHEN MACHINE

Fish-Bone Divider

20.GH-T01

Power : 1.5kW / 230V / 50Hz
Productivity : 300kg/h
Weight : 180kg
Dim : 88 x 82 x 92cm



21.GH-T03

Power : 2.2kW / 230V / 50Hz
Productivity : 500kg/h
Weight : 280kg
Dim : 95 x 85 x 92cm

Fish Cake Mixer

22.FSFCM-60 (S/S)

Capacity : 60kg
Power : 1.5kW / 230V / 50Hz
Weight : 125kg
Dim : 80 x 74 x 121cm



Meat Ball Machine

23.RWJ

Blade Size : 1.9/2.2/2.5cm
Power : 1.1kW / 230V / 50Hz
Productivity : 16,800pcs/h
Weight : 160kg
Dim : 71 x 38 x 129cm



Sausage Filler

24.SF-260

Bowl : Ø26cm
Power : 1.1kW / 230V / 50Hz
Productivity : 400kg/h
Weight : 150kg
Dim : 64 x 49 x 124cm



Bowl Cutter

25.QS-503A

Bowl : Ø20cm
Capacity : 3L
Power : 0.65kW / 230V / 50Hz
Speed : 1,400rpm
Weight : 32kg
Dim : 23 x 30 x 48cm



26.QS-505A

Bowl : Ø23cm
Capacity : 5L
Power : 1.1kW / 230V / 50Hz
Speed : 1,400rpm
Weight : 39kg
Dim : 31 x 38 x 53cm

27.QS-508A

Bowl : Ø29cm
Capacity : 8L
Power : 1.5kW / 230V / 50Hz
Speed : 1,400rpm
Weight : 56kg
Dim : 37 x 45 x 62cm



28.QS-620A (S/S)

Bowl : Ø60cm
Capacity : 20L
Power : 1.1kW / 230V / 50Hz
Productivity : 300kg/h
Weight : 126kg
Dim : 78 x 71 x 94cm



29.TQ5

Bowl : Ø35cm
Capacity : 5L
Power : 0.37kW / 230V / 50Hz
Productivity : 80kg/h
Weight : 62kg
Dim : 53 x 42 x 54cm



FRESH



财源机械五金贸易

CHYE GUAN TRADING (JM0147180-M)

No 82 & 84, Jalan Suria 2, Taman Malim Jaya,
75250 Melaka.

Tel: 06-3363480, 06-3363482 Fax: 06-3363480

Email: chyeguan82@gmail.com

KITCHEN MACHINE

Vegetable Cutter

30.BC-01

(made in Taiwan)

Power : 0.18kW / 230V / 50Hz

Weight : 20kg

Dim : 50 x 33 x 52cm



31.DQ-180A

Cutter : 6 pcs

Cutting Thickness:

- Dicing : 0.8cm

- Shredding (Round): 0.45cm

- Shredding (Square): 0.25cm/0.4cm

- Slicing : 0.15cm / 0.45cm

Power : 0.25kW / 230V / 50Hz

Weight : 19kg

Dim : 40 x 29 x 54cm



32.VC65MS

Cutter : 6pcs

Cutting Thickness:

- Dicing : 0.8cm

- Shredding : 0.3cm / 0.5cm / 0.7cm

- Slicing (double blades) : 0.4cm

- Slicing (triple blades) : 0.2cm

Power : 0.75kW / 230V / 50Hz

Weight : 26kg

Dim : 66 x 33 x 54cm



33.EC-501

(made in Taiwan)

Power : 0.37kW / 230V / 50Hz

Weight : 45kg

Dim : 51 x 45 x 60cm



34.FPC

Power : 1.1kW / 230V / 50Hz

Productivity : 300kg/h

Weight : 85kg

Dim : 48 x 65 x 61cm



35.ST301A

Operating : Manual

Weight : 1kg

Dim : 27 x 12 x 13cm



Blender

36.FHDB-9

Blade : 9"

Container Cap : 2.5kg

Input Source : 1.1kW / 230V / 50Hz

Speed : 1,500rpm

Weight : 50kg

Dim : 41 x 66 x 122cm



Dewatering Machine

(made in Taiwan)

37.MH-819A

Capacity : 6kg

Power : 0.37kW / 230V / 50Hz

Weight : 27kg

Dim : 50 x 40 x 83cm



Medicine Machine

38.SY-198

Power : 0.3kW / 230V / 50Hz

Productivity : 48,000pcs/h

Speed : 200rpm

Tablets thickness : 0-0.3cm

Weight : 15kg

Dim : 30 x 18 x 23cm



Vibro Separator Filter

39.FVF-16

Power : 0.37kW / 230V / 50Hz

Productivity : 75kg/h

Weight : 51kg

Dim : 60 x 43 x 89cm



FRESH®



财源机械五金贸易

CHYE GUAN TRADING (JM0147180-M)

No 82 & 84, Jalan Suria 2, Taman Malim Jaya,
75250 Melaka.

Tel: 06-3363480, 06-3363482 Fax: 06-3363480

Email: chyeguan82@gmail.com

PACKAGING MACHINE

Impulse Sealer

1. PFS-200

Operating : Manual
Power : 0.3kW / 230V / 50Hz
Sealing Length : 20cm
Sealing Width : 0.2cm
Thickness : 0.001-0.08cm
Weight : 2.4kg
Dim : 52 x 35 x 37cm



2. PFS-300

Operating : Manual
Power : 0.4kW / 230V / 50Hz
Sealing Length : 30cm
Sealing Width : 0.2cm
Thickness : 0.001-0.08cm
Weight : 3.75kg
Dim : 48 x 44 x 39cm



3. PFS-450

Operating : Foot
Power : 1.05kW / 230V / 50Hz
Sealing Length : 45cm
Sealing Width : 0.2cm
Thickness : 0.005-0.09cm
Weight : 21kg
Dim : 80 x 55 x 25cm



Strapping Machine (Semi-Auto)

4. PW-316H

Power : 0.18kW / 230V / 50Hz
Strap Width
(adjustable) : 0.6/0.9/1.2/1.55cm
Tension Strength : 15-50kg
Strapping Speed : 2s/strap
Min. Package Size : 6cm
Weight : 100kg
Dim : 91 x 58 x 75cm



5. PW-316L

Power : 0.18kW / 230V / 50Hz
Strap Width
(adjustable) : 0.6/0.9/1.2/1.55cm
Tension Strength : 15-50kg
Strapping Speed : 2s/strap
Min. Package Size : 6cm
Weight : 90kg
Dim : 149 x 58 x 48cm



Vacuum Packager

6. DZQ400N

Type : Standing
Single Sealing-bar : 40 x 1cm
(DZ400TN/A)
Double Sealing-bar : 40 x 1cm
(DZ400TN/B)
Cycle Time : 10-25s
Power : 0.9kW / 230V / 50Hz
Productivity : 20m³/h
Weight : 95kg
Chamber : 44 x 42 x 8cm
Dim : 56 x 50 x 105cm



7. DZQ400TN

Type : Table Top
Single Sealing-bar : 40 x 1cm
(DZ400TN/A)
Double Sealing-bar : 40 x 1cm
(DZ400TN/B)
Cycle Time : 10-25s
Power : 0.9kW / 230V / 50Hz
Productivity : 20m³/h
Weight : 45kg
Chamber : 44 x 42 x 8cm
Dim : 56 x 50 x 46cm



Wrapping Packager

8. HW-450

Head Cut Length : 3.2cm
Head Shrinking Plate : 38.5 x 12.3cm
Power : 230V / 50Hz
Roller Width : 45.2cm
Weight : 6.5kg
Dim : 54 x 68 x 20cm



FRESH[®]



财源机械五金贸易

CHYE GUAN TRADING (JM0147180-M)

No 82 & 84, Jalan Suria 2, Taman Malim Jaya,
75250 Melaka.

Tel: 06-3363480, 06-3363482 Fax: 06-3363480

Email: chyeguan82@gmail.com

S/STEEL TROLLEY & TABLE

Beverage Cart

1. FRC-2
Layer : 2
Tray thickness : 0.05cm
Wheel : PVC with stopper
Weight : 4.5kg
Dim : Ø40 x 72cm



Dining Cart

4. FRD-L2
Layer : 2
Tray thickness : 0.05cm
Wheel : Rubber with stopper
Weight : 12kg
Dim : 95 x 50 x 95cm



2. FQRD-L2
Layer : 2
Tray thickness : 0.05cm
Wheel : Rubber with stopper
Weight : 13.5kg
Dim : 95 x 50 x 95cm



5. FRD-L3
Layer : 3
Tray thickness : 0.05cm
Wheel : Rubber with stopper
Weight : 15.6kg
Dim : 95 x 50 x 95cm



Cooling Trolley

3. FR-15A
Layer : 15
Tray thickness : 0.08cm
Wheel : PVC with stopper
Weight : 20.5kg
Dim : 47 x 62 x 174cm



Dishes Collecting Cart

6. FTC-5A
Layer : 3
Tray thickness : 0.05cm
Wheel : PVC with stopper
Weight : 13kg
Dim : 90 x 46 x 95cm



FRESH[®]





财源机械五金贸易
CHYE GUAN TRADING (JM0147180-M)

No 82 & 84, Jalan Suria 2, Taman Malim Jaya,
75250 Melaka.

Tel: 06-3363480, 06-3363482 Fax: 06-3363480

Email: chyeguan82@gmail.com

S/STEEL TROLLEY & TABLE

Working Table



7. FWT920-1
Layer : 1
Weight : 22kg
Dim : 92 x 76 x 85cm



13.FWT920-2
Layer : 2
Weight : 24kg
Dim : 92 x 76 x 85cm

8. FWT1120-1
Layer : 1
Weight : 24kg
Dim : 112 x 76 x 85cm

14.FWT1120-2
Layer : 2
Weight : 26kg
Dim : 112 x 76 x 85cm

9. FWT1220-1
Layer : 1
Weight : 25kg
Dim : 122 x 76 x 85cm

15.FWT1220-2
Layer : 2
Weight : 27kg
Dim : 122 x 76 x 85cm

10.FWT1530-1
Layer : 1
Weight : 30kg
Dim : 153 x 76 x 85cm

16.FWT1530-2
Layer : 2
Weight : 33kg
Dim : 153 x 76 x 85cm

11.FWT1830-1
Layer : 1
Weight : 35kg
Dim : 183 x 76 x 85cm

17.FWT1830-2
Layer : 2
Weight : 38kg
Dim : 183 x 76 x 85cm

12.FWT2140-1
Layer : 1
Weight : 40kg
Dim : 214 x 76 x 85cm

18.FWT2140-2
Layer : 2
Weight : 43kg
Dim : 214 x 76 x 85cm



FRESH[®]